



Bur Oak Tribune



Wildwood Nature Center

Park Ridge Park District

March 2011

Inside This Month's Issue:

- Nature Friends Classes (p 2)
- Spring Flower Bulb Fundraiser (p 2)
- Nature Frame (p 3)
- Air-cleaning house plants (p 3)
- Hiking Word Search (p 5)
- Pet Connection (p 6)

And more...

General Information

During your visit to Wildwood Nature Center you will find an **Animal Exhibit Room** with a turtle pond, snakes, prairie dogs, snapping turtles, and much, much more. Wildwood also offers an activity room called the **Nature Nook** complete with books, puzzles, puppets, games, and activities. Visit the Nook this month to learn about amphibians!

Wildwood Nature Center is located at:

529 Forestview Ave.
Park Ridge, IL 60068

Contact Info:

847-692-3570
jclauson@prparks.org

Web: www.prparks.org

Visiting Hours:

Tuesday -Thursday 10am-6pm
Saturday 10am-4pm

Admission : FREE

Wildwood Nature Center Bur Oak

Editor: Hillary Wells-Pranga

Nature Feature

This month's feature is the bark beetle. Bark beetles are named for where they live; inside the bark of trees. There are thousands of species of bark beetles living all over the world. Many local environmental issues have been caused by



mobugs.blogspot.com

two species of bark beetle that are not native, the emerald ash borer and the Asian longhorned beetle. These beetles and others overwhelm the tree with their burrowing or introduce a fungi that is harmful.

Most species however, in their native habitat, do not harm the tree. The bark

beetle's life cycle begins when the mother beetle burrows into the bark of the tree and lays her eggs in a central tunnel. The eggs hatch into worm-like creatures called larva, which carve out more tunnels as they eat their way through the bark. The patterns they make are called galleries and you can see them once the tree dies and its bark starts falling off. If you look

closely, you can see the tunnels get larger and larger as the larvae are growing. Once the larvae have eaten enough they undergo



crawford.tardigrade.net/

what is called complete metamorphosis. The first step is to form a pupa (like a butterfly chrysalis). Inside the pupa case they undergo a complete change into an adult beetle with all the traits of a true insect: six legs, antenna, three body parts, and compound eyes.

News Bulletins

- Check out the spring brochure for all of Wildwoods upcoming fun events, classes and trips! You can also find them online at www.prparks.org.
- The Wildwood spring flower bulb fundraiser sale is now underway, visit www.prparks.org to print your order form for Irises, Lilacs, Coneflowers, Blueberries and more. Orders are due April 8th. 50% of the proceeds will go toward the restoration of Wildwood Prairie.
- March 26th at 8:30pm is Earth Hour. Every March millions of people across the globe turn off their lights for one hour in support of environmental awareness. Earth Hour is a campaign to raise awareness about “dirty” vs. “clean” energy, and other things that could contribute to global climate change.



Upcoming Events & Classes

Nature Friends* (Ages 3-4 without adult):

Mar 14 (Snakes), 10:00am-11am or 1:30pm-2:30pm, Class #17718 or #17717

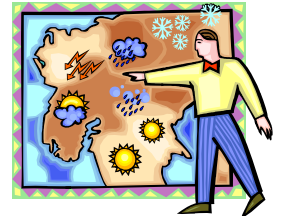
Mar 21 (Camouflage), 10:00am-11am or 1:30pm-2:30pm, Class #17721 or #17722

Your child will enjoy learning about nature and animals through fun games, crafts, and activities. Nature Friends is all about hands-on learning and ventures out on nice days.

Fee: \$9 residents/\$14 nonresidents

Community Collaborative Rain Hail and Snow Network* (Ages 16 & Up):

Apr 9, 10:00am- Noon~ Join CocoRaHS! This free training session is offered through the National Weather Service and will prepare you to be a backyard weather observer. Using low-cost measurement tools and an interactive website you can provide high quality data for natural resource education and research. Program is free, but you will need to purchase a \$25 rain gauge. Register required, Class #18885.



Earth Day Celebration (All Ages): Saturday, Apr 30, 11:00am-3:00pm~ A community celebration held in Maine Park featuring music, interactive booths, “green” merchandise and information, arts and crafts, games, and family entertainment. Keep an eye out for more details in the spring brochure and other fliers!

Fee: Free

***Registration is required for all classes, for more information call 847-692-3570 or Discover the Fun on the Park District website at www.prparks.org**

Volunteer News

Happy Birthday to Birthday Volunteer Connie! Congratulations to the Friday and Wednesday teams for earning a snack party!



Family Fun Corner

Nature Frame

Winter storms blow a lot of branches and twigs down to the ground. Here is a fun project you can do with them.

Materials: sticks, glue gun, twine or thick string/yarn

- Pick a photo you would like to frame.
- Go on a hike and collect straight sticks from 1/4” to 1/2” thick.
- Trim off and extra branches and leaves.
- Brake the sticks so that they are 4-6 inches longer than your photo (usually 11 inches is a good length)
- Arrange your sticks into four bundles of 3-4 sticks.
- Take two bundles and one person will hold them at right angles to each other (with ends overlapping so it looks like a ‘T’) while the other wraps the string/twine around the ‘X’ in a crisscross fashion so the string is making an ‘X’ shape too.
- Add the other bundles until you have your frame, then tie a piece of string to the back for hanging.
- Trim your picture to fit and an adult can glue it to the back of the frame at the corners.



Earth Stewards

You can be an earth steward by growing air cleaning plants in your home, office or classroom.

Why should I grow air cleaning plants in my home, office or classroom?

- The air inside a building can sometimes get polluted by new carpeting, cleaning products, paint, air conditioning/central air, and other things.

What plants are good at air-cleaning?

1. Golden pothos—vine-like plant, tolerant of a variety of indoor conditions included low light, humidity and cooler temperatures, but needs well-drained soil.
2. Gerbera daisy—small flowering plant, likes full to partial sun, needs well drained soil.
3. Peace lily—bushy flowering plant, can survive in low light, likes moist soil.
4. Marginata—slowing growing shrub and small tree, tolerates a variety of light levels and drier soil.
5. Draecena—a variety of spiky-leaved plants that resemble palm trees, prefer bright light (but will tolerate low) and humidity.
6. English Ivy—trailing plant which can be formed into many shapes, likes bright filtered to low light and moist soil.



Peace lily



Junior Naturalist Pages



Wild Wonders

Well, hello my nature friends! I am Merry Mouse, here to welcome you to another edition of the Wildwood wildlife news. Finally we are nearing the end of winter, and there are lots of ways to tell that spring is on its way. I was taking a scurry (mice never walk) a week ago when I heard a familiar call that I had not heard all winter. It was Ramsey Red-Wing Blackbird! I spotted him up in a tree with his shiny black feathers and a band of red on his wing. He told me he had just returned from the Southwest. Did you know Red-wings usually arrive before Robins? Ramsey thinks he should be the first true sign of spring! Birds leaving can tell us that spring is coming too. A few days ago I was by the Nature Centers big pine tree when I spotted Danielle Dark-eyed Junco. She told me she was getting ready to head back up to Canada where she will have a family over the summer. In other bird news, I was out looking for food a few days ago and spotted a small bird with a gray back, a white belly and a tuft on its head. Do you know who it was? It was Tonya Tufted Titmouse. She told me she had been flying around the neighborhood looking for bird feeders in people's backyards. Tonya is excited that spring is coming because she also likes to eat caterpillars and insects. Birds are not the only things that tell us spring is coming. As I scurried through the Woodland Walk the other day I spotted something bright orange, so I stopped to investigate. They were Scarlet cup mushrooms! When Chula Chipmunk comes out of hibernation she will be so excited, she loves eating mushrooms! I also have a green slimy friend who's arrival tells us spring is here. In fact he has spring in his name. Do you know who that is? Spencer Spring Peeper! Spring peepers are tiny frogs that making a "peeping" noise. Time for me to go wake up LeeAnn Ladybug so she can take over reporting Spring, later folks!



Merry's challenge: Go for a walk in the woods and try to check off these signs that spring coming:

___ Robins digging for worms

___ Red-wing blackbird

___ Snowdrops blooming

___ Tree buds

___ Patches of green grass

___ Geese flying

___ Goldfinches molting

___ Ducks flying

___ Squirrels chasing each other

___ Animals making nests

___ Insects emerging

___ Spring peepers calling





Junior Naturalist Pages



The weather is getting warmer and the days are getting longer so get outside for a hike! Here is a word search with some hiking words, try to find all 22!

- BACKPACK**
- BOOTS**
- BRIDGE**
- RIVER**
- CANTEEN**
- CLIMB**
- EXERCISE**
- HIKE**
- FOREST**
- HILL**
- LEDGE**
- LEGS**
- MILES**
- RIVER**
- ROCKS**
- SCENERY**
- SEE**
- STEEP**
- STICK**
- STREAM**
- TRAIL**
- WALK**
- WOODS**

K	S	E	P	G	N	T	L	P	W	E	M
K	K	K	A	E	E	S	T	R	A	I	L
B	C	L	C	B	E	E	E	L	L	G	M
M	O	A	S	P	T	T	F	E	K	R	R
I	R	O	P	M	N	I	S	S	A	I	I
L	B	T	T	K	A	I	M	E	V	A	F
C	R	N	E	S	C	E	N	E	R	Y	W
H	I	L	L	R	T	A	R	D	K	O	E
T	D	P	E	E	T	I	B	T	O	I	F
T	G	X	G	D	S	S	C	D	S	A	H
A	E	K	S	M	G	E	S	K	N	E	S
R	T	E	S	I	I	E	E	S	I	S	G

Animal Feeding Times

Watch the Wildwood staff feed some of your favorite animals! Call the Nature Center for more information at 847-692-3570.

This Month:

Saturdays 10:30am and 3:30pm

Wednesdays 10:30am and 3:30pm

Location: Animal Room

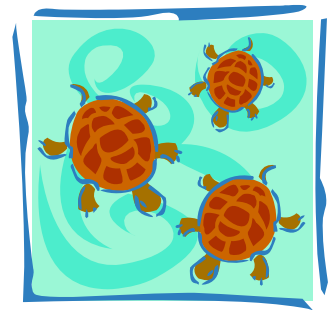
Critter Connection

Get up close to a Wildwood animal during a short, family friendly presentation. Learn about the featured animal, what makes him special, what he eats, and more. Make sure to pet him before he heads back to the animal room. Visit different animals each month.

Day: Saturday s

Time:
10:30am & 3:30pm

Location:
Nature Nook



Ask the Naturalist

Wildwood is a great place to find answers about the natural world.

Q: What is the gestation period (pregnancy duration) of a mouse?

A: A female mouse can get pregnant as often as every three weeks, carrying the babies from 18-21 days.



Submit your questions to Wildwood's mailing address (2701 W. Sibley) or email them to:

jclauson@prparks.org. We encourage people of all ages to write in with their questions!

Pet Connection

Needs a home:

- ~ Nine inch female red-eared slider (water turtle). Comes with 50 gallon tank.
- ~ Male short-hair guinea pig. Comes with cage and supplies.

Wanted:

- ~ Lizard

To respond to these ads or to post an ad, please contact Wildwood at 847-692-3570.